

Wildlife

- Do not feed the wildlife.
- Do not approach the wildlife, keep plenty of space between you. (see diagram below)
- We recommend you carry bear spray
- All food, scented items, or refuse **MUST** be secured when not in use.
 - Within a secured vehicle or a hard sided trailer (no open top jeeps, pickup beds or coolers)
 - IGBC certified bear canisters or horse pack panniers or Forest Service storage boxes
 - Properly hung from trees/ poles (see below)



Quick Packing Tips

(To Be Self-Contained)

- Water
- Food
- Shovel
- Food Storage
- Garbage Bags
- Sunscreen
- Insect Repellent
- Bear Spray
- Eye protection
- Map
- Bucket
- Flashlight
- Personal Meds/ First Aid

Shoshone National Forest Washakie Ranger District Office

333 East Main Street
Lander, WY 82520
Phone #: 307-332-5460

Normal Office Hours: Monday—Friday
8:00 a.m. - 4:30 p.m.

Special Extended Eclipse Hours: 8/17—8/21

Important Websites & Numbers

- www.fs.usda.gov/shoshone
- <http://www.windrivereclipse.org/>
- <https://duboiseclipse.wordpress.com/>
- <http://www.travelwyoming.com/eclipse>
- <https://www.fs.usda.gov/detail/ochoco/home/?cid=fseprd533019>
- <https://www.blm.gov/solareclipse>
- Fire Dispatch: (307)-578-5740
- Fremont County Sheriff: (307)-332-5611

Total Solar Eclipse Shoshone National Forest Washakie Ranger District



August 21, 2017



Welcome to the Shoshone National Forest!

The Shoshone National Forest offers superb scenery and endless recreational opportunities! As America's first national forest, the Shoshone National Forest consists of 2.4 million acres of varied terrain ranging from sagebrush flats to rugged mountains. You've come to the great place to experience this total solar eclipse and as well as our nation's superb public lands.

Grannier Meadows



What is a Total Solar Eclipse?

It is an astronomical event when the Moon passes between the Sun and Earth, and the Moon fully blocks the Sun.

You can only see the complete eclipse within the lines of totality. The centerline is where the longest duration can be observed.

Vehicle Travel

- Drive on established roads only.
- Do not block traffic, roads **must** be passable to other vehicles.
- Be alert to wildlife on roadways, especially at dusk and at night.
- MVUM (motor vehicle use maps) are available online, via the Avenza App, or at our district offices
- GPS is **NOT** always reliable, cell phone service can be spotty.

Leave No Trace: Outdoor Ethics

1. Plan ahead and prepare
2. Travel and camp on durable surfaces
3. Dispose of waste properly
4. Leave what you find
5. Minimize campfire impacts
6. Respect wildlife
7. Be considerate of other visitors



Camping: First Come, First Serve

Developed Camping

- Established campgrounds with fees
- 16 day stay limit
- Bathrooms and water available (except at Brooks Lake CG)

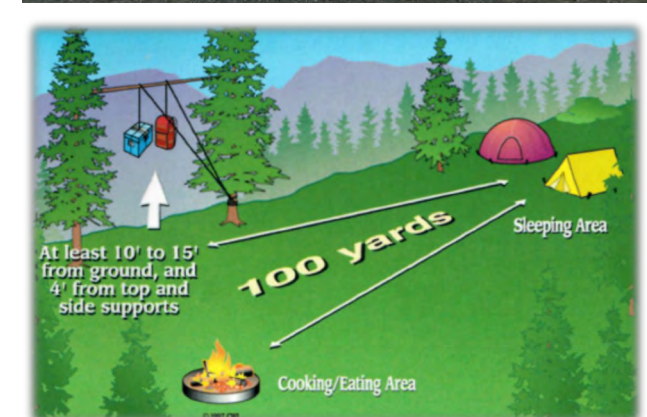
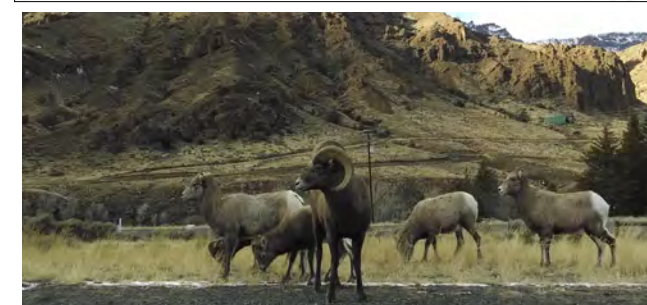
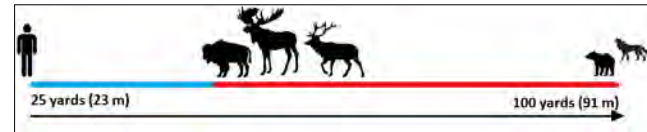
Undeveloped/Dispersed Camping

- Dispersed camping, free
- 16 day stay limit
- No bathrooms or water



Backcountry/ Wilderness Camping

- Permits are **NOT** required for non-commercial groups



Sanitation

Trash

- **Pack it in, pack it out!**
- Make sure to store it so bears can't get it.

Bathroom

- Deposit solid human waste in catholes dug 6 to 8 inches deep, at least 200 feet from water, camp and trails. Cover and disguise the cathole when finished.
- Pack out toilet paper and hygiene products.

Water

- Bring your own water
- Know how to purify water.



Important Times of the Eclipse

- Start of Partial Eclipse: 10:18 am
- Start of Total Eclipse: 11:37 am
- **Maximum Eclipse: 11:38 am**
- End of Total Eclipse: 11:39 am
- End of Partial Eclipse: 1:03 pm
- Total Elapsed Time: 2:19 minutes

Campfires

- Keep fires small.
- Build fires in existing fire rings.
- **Never** leave a fire unattended.
- When finished with charcoal briquettes, dunk them in water.
- Just because there is no smoke does not mean the fire is out.
- Drown and stir the fire with water until it is **COLD TO THE TOUCH** with the back of your hand.

